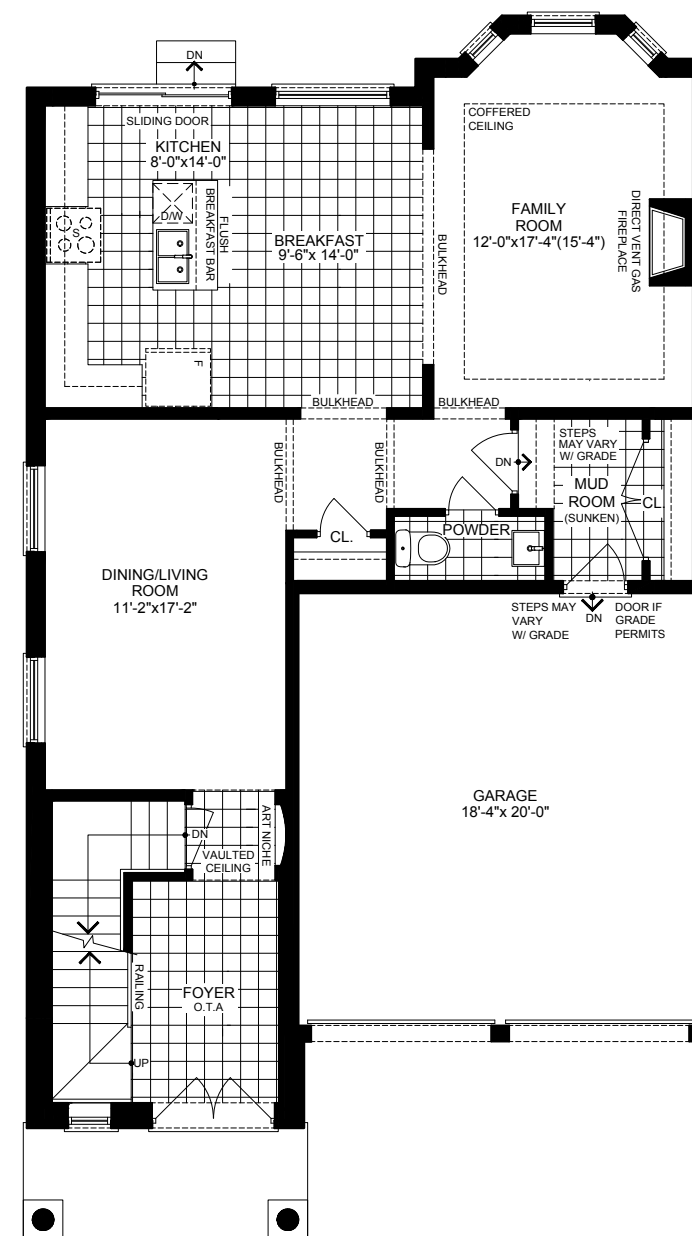


# Cinnabar

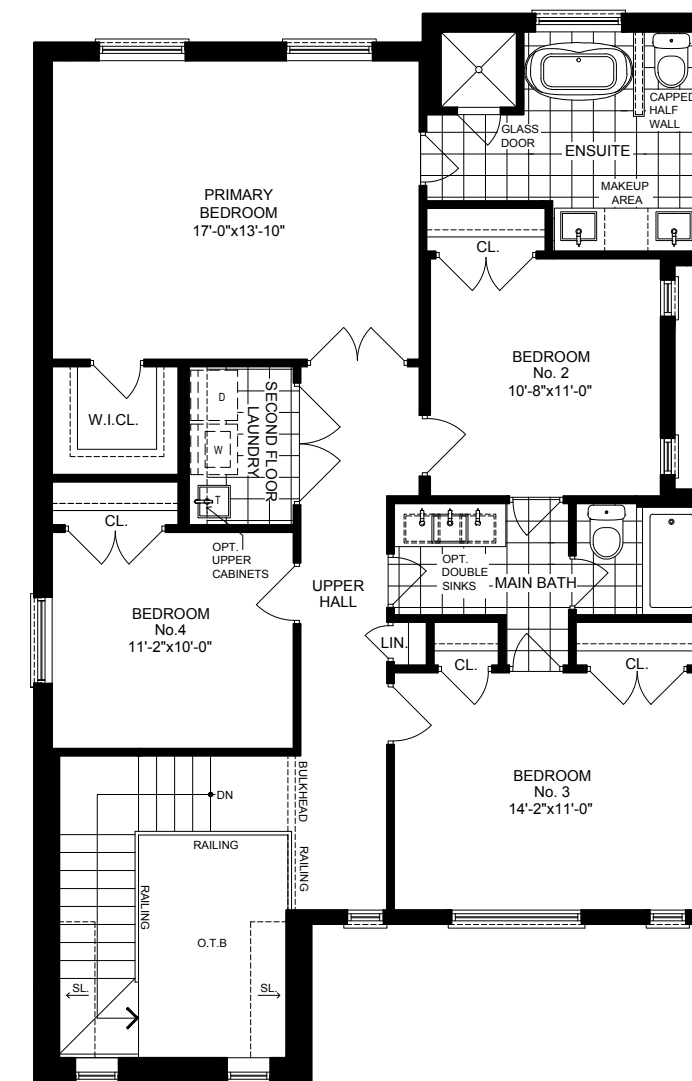
38 ft.

MAYFIELD VILLAGE

Elevation A | 2,401 SQ.FT.



GROUND A



SECOND A



Elevation B | 2,421 sq.ft.



Elevation C | 2,416 sq.ft.

Visit [aspensridgehomes.com](http://aspensridgehomes.com)  
Please see sales representative for Elevation B & C.

Specifications may change without notice. Please see sales representative for other elevation configurations and basement plans. E.&O.E.  
All illustrations are artist's impressions. © Aspen Ridge Homes. All Rights Reserved. February 2023.

