

Orleans

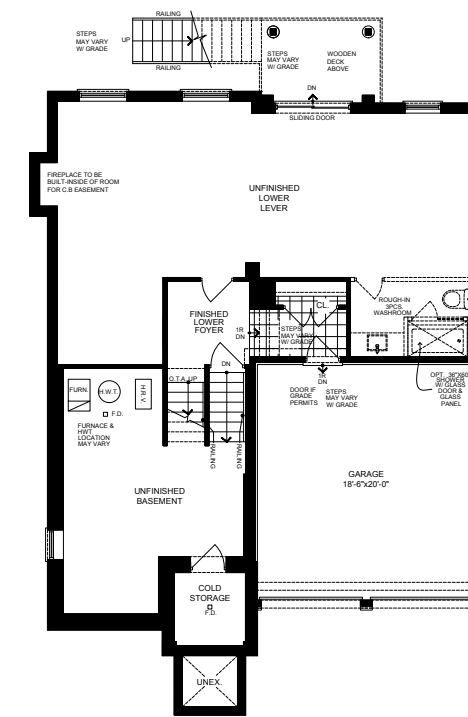
45 ft.

MAYFIELD VILLAGE

Elevation A | 3,213 SQ.FT.



Elevation B | 3,225 sq.ft.



LOWER LEVEL A

Visit aspensridgehomes.com
Please see sales representative for Elevation B & C.

Specifications may change without notice. Please see sales representative for other elevation configurations and basement plans. E.&O.E.
All illustrations are artist's impressions. © Aspen Ridge Homes. All Rights Reserved. February 2023.

