



Elevation A

45' Joan

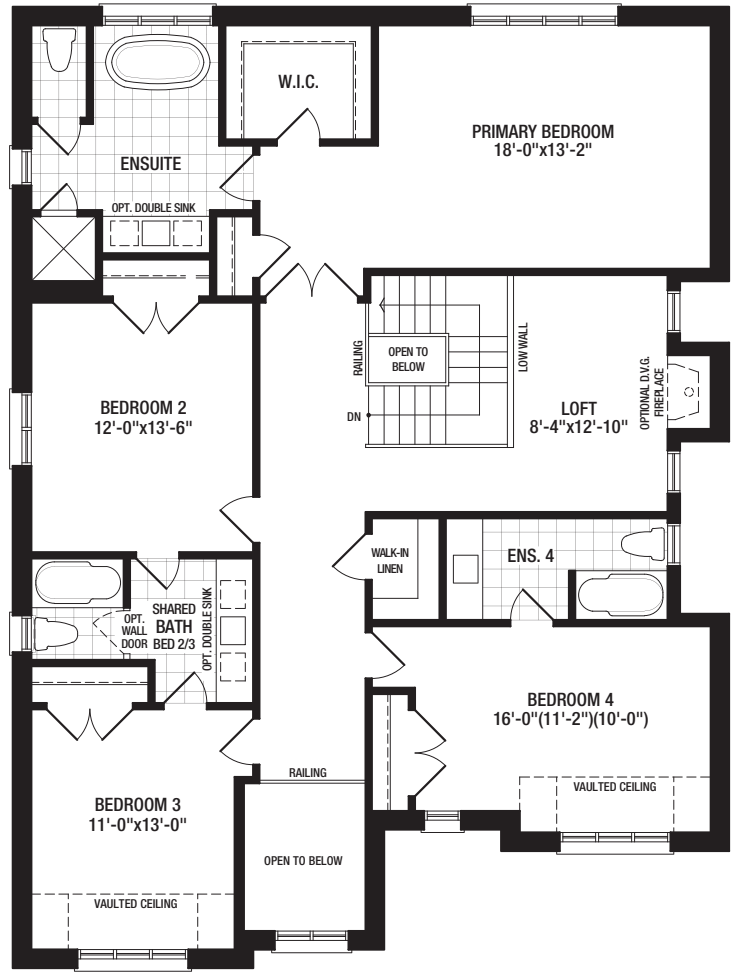
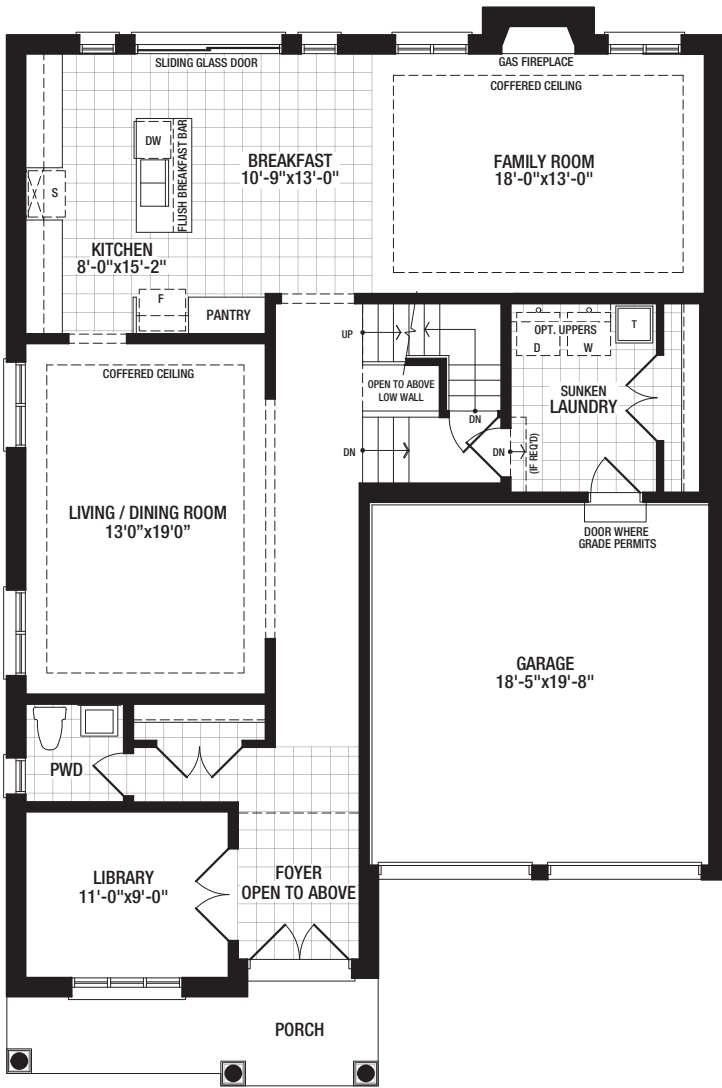
- Elevation A 3,285 SQ.FT.
- Elevation B 3,277 SQ.FT.
- Elevation C 3,281 SQ.FT.



Elevation B

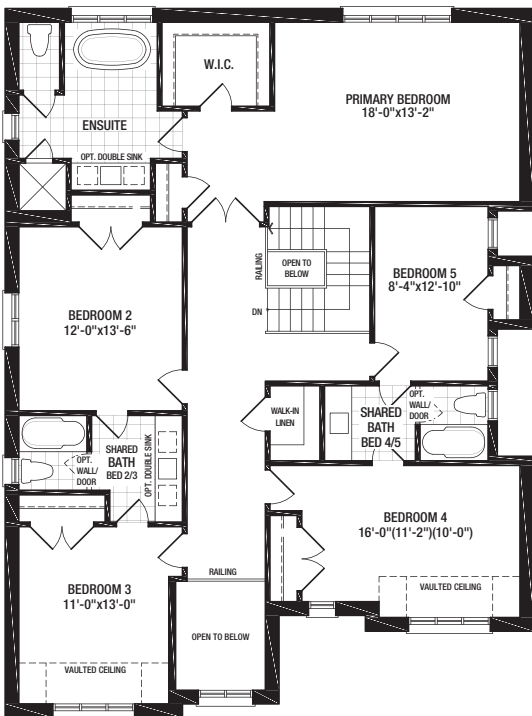


Elevation C

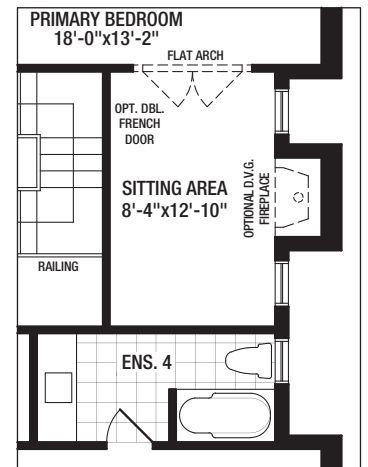


MAIN FLOOR A

SECOND FLOOR A



OPTIONAL SECOND FLOOR A 5 BEDROOM



PARTIAL OPTIONAL PRIMARY SITTING AREA FOR 4 BED PLAN