

SPOONER

30' SINGLE

ELEVATION A | 2,357 SQ.FT.



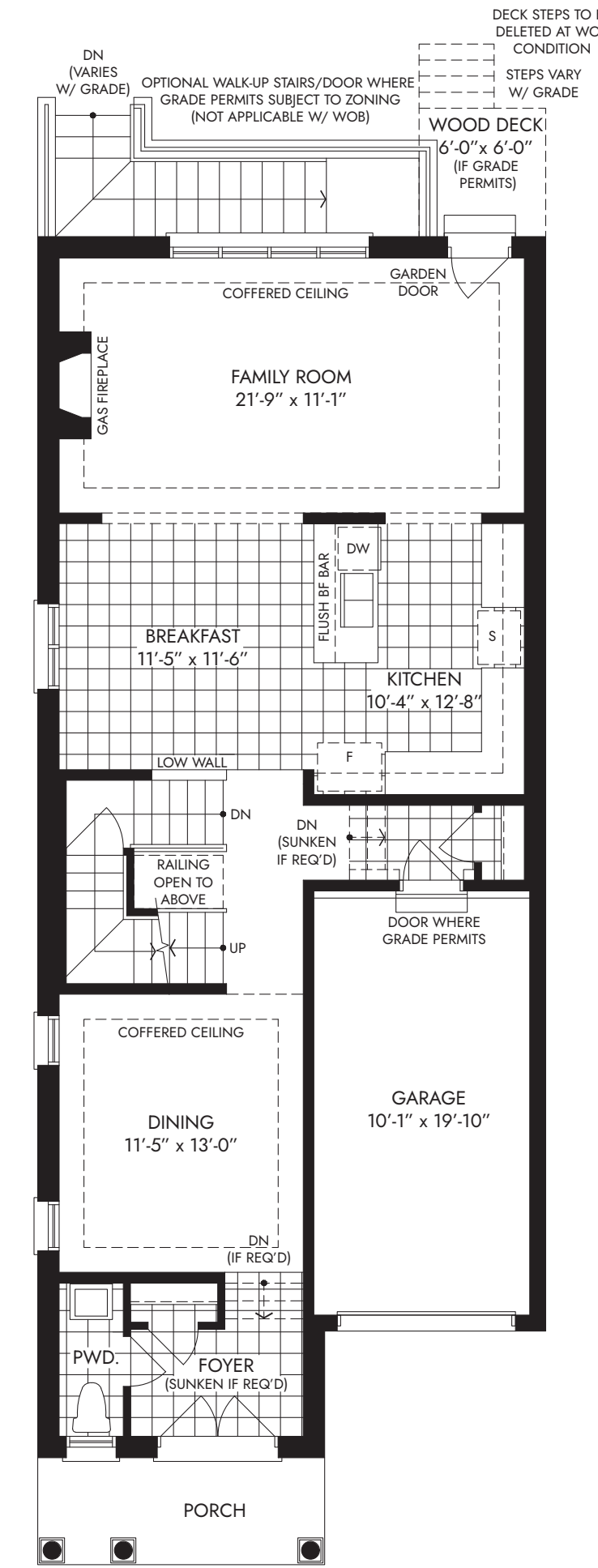
ELEVATION B | 2,357 SQ.FT.



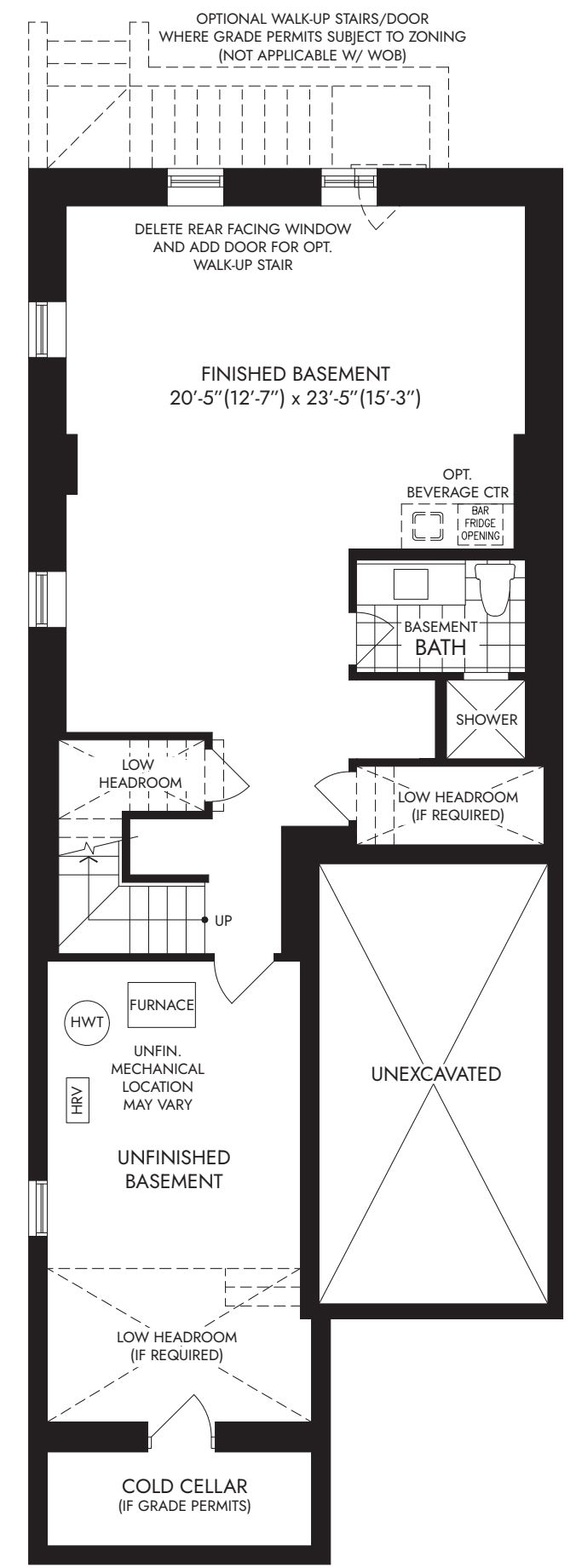
ELEVATION C | 2,351 SQ.FT.



GROUND FLOOR
(ELEV. A)



OPT. FINISHED
BASEMENT



SECOND FLOOR
(ELEV. A) - 3 BED

